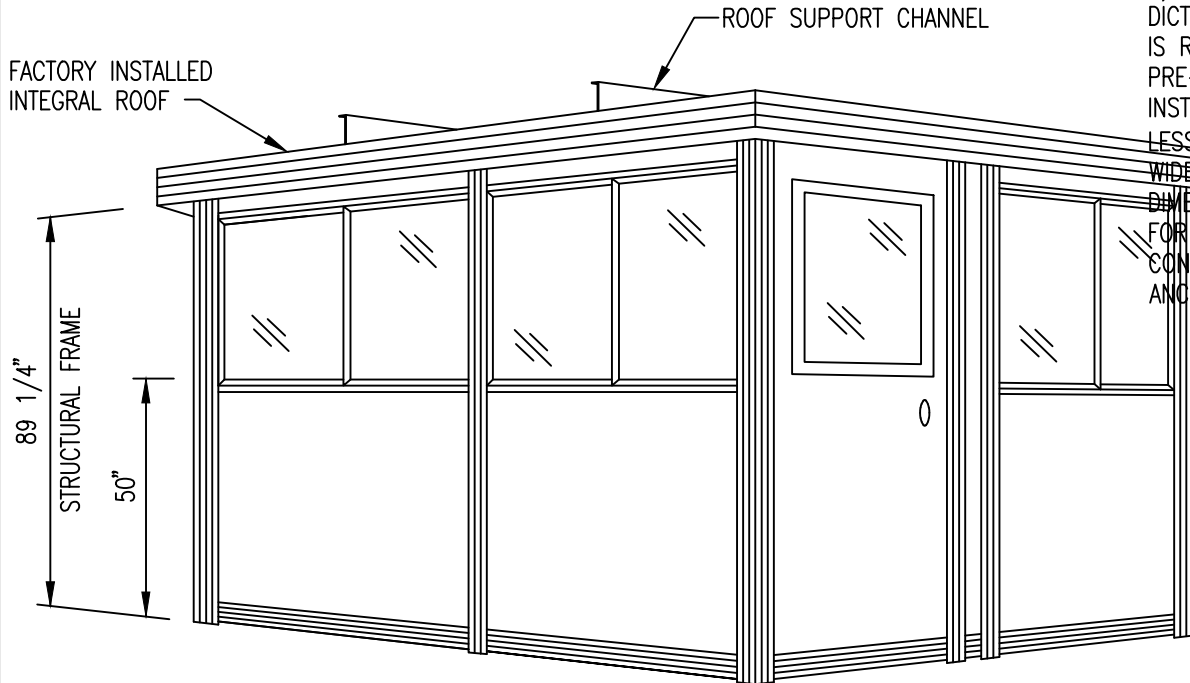


FLOOR PLAN

GENERAL NOTES:

- 1) PEARL (#750) FRP INTERIOR & EXTERIOR WALL SURFACE.
- 2) ALUMINUM FRAMING EXTRUSIONS HAVE A MILL FINISH.
- 3) ALL WINDOWS, INCLUDING DOORS HAVE CLEAR TEMPERED GLASS.
- 4) UNIT INCLUDES FACTORY INSTALLED INTEGRAL ROOF.
- 5) INTERIOR CLEAR HEIGHT (FLOOR-TO-CEILING) IS 82 5/8".
- 6) OVERALL EXTERIOR HEIGHT IS 95" (W/ROOF SUPPORT CHANNEL).
- 7) FINISHED FLOORING TO BE GRAY 1/2" HDPE LAMINATED OSB PANEL.
- 8) THE 2x4 SUPPORT BOARDS ATTACHED TO THE UNDERSIDE OF THE BLDG. ARE USED FOR SHIPPING PURPOSES ONLY AND NEED TO BE REMOVED AT INSTALLATION.
- 9) REQUIREMENT ARE USUALLY DICTATED BY LOCAL CODES, BUT IT IS RECOMMENDED THAT PORTAFAB PRE-ASSEMBLED BUILDINGS BE INSTALLED ON A CONCRETE SLAB NO LESS THAN 4" IN THICKNESS AND 6" WIDER THAN THE OUT-TO-OUT DIMENSIONS ON ALL FOUR SIDES FOR ANCHORING. SEE CONSTRUCTION DETAIL SHEET FOR ANCHORS.



MODEL 810

MODEL 810
PRE ASSEMBLED

**PORTA-FAB
CORPORATION**

P.O. BOX 1084 CHESTERFIELD, MO. 63006-1084

JOB: PAB810

SCALE

N/A

DATE

DRAWN BY

CD

REVISED

CHECKED

SHEET NO. 1 OF 1