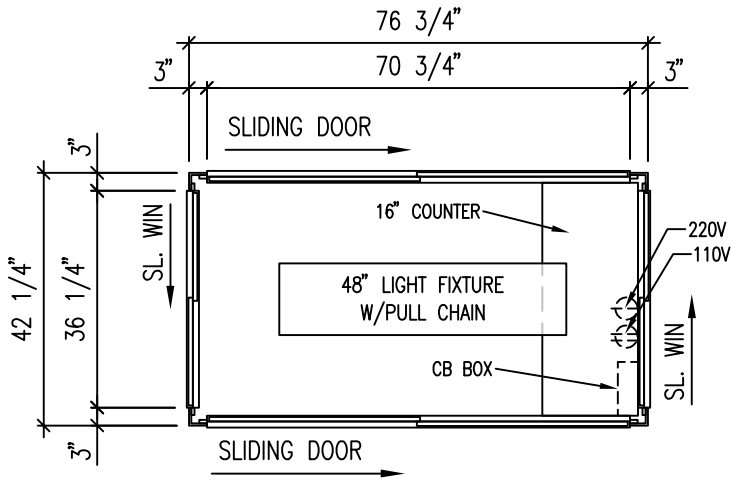


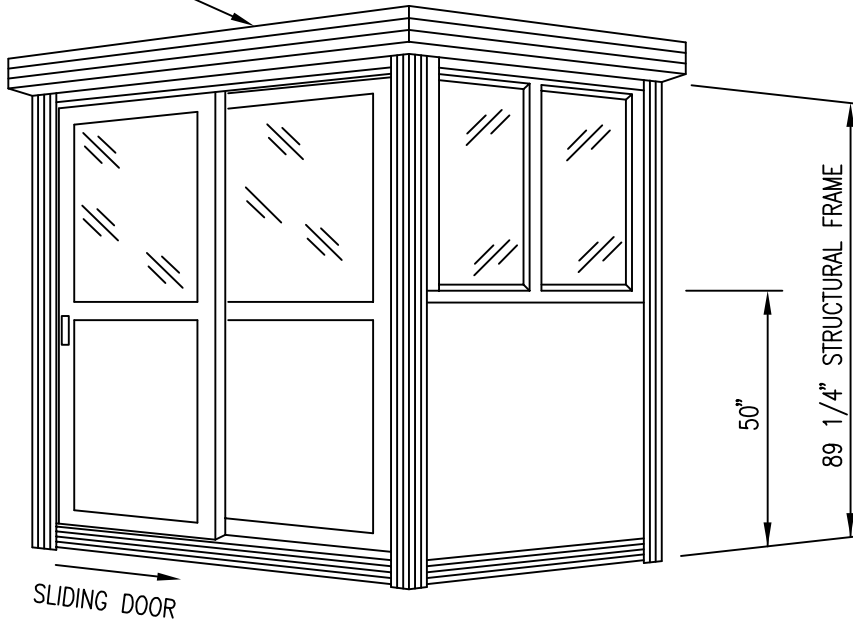
GENERAL NOTES:

- 1) PEARL (#750) FRP INTERIOR & EXTERIOR WALL SURFACE.
- 2) ALUMINUM FRAMING EXTRUSIONS HAVE A MILL FINISH.
- 3) ALL WINDOWS, INCLUDING DOORS HAVE CLEAR TEMPERED GLASS.
- 4) UNIT INCLUDES FACTORY INSTALLED INTEGRAL ROOF.
- 5) INTERIOR CLEAR HEIGHT (FLOOR-TO-CEILING) IS 82 5/8".
- 6) OVERALL EXTERIOR HEIGHT IS 91".
- 7) FINISHED FLOORING TO BE ALUMINUM TREADPLATE.
- 8) THE 2x4 SUPPORT BOARDS ATTACHED TO THE UNDERSIDE OF THE BLDG. ARE USED FOR SHIPPING PURPOSES ONLY AND NEED TO BE REMOVED AT INSTALLATION.



FLOOR PLAN

FACTORY INSTALLED INTEGRAL ROOF



MODEL 36S

<p>MODEL 36S PRE ASSEMBLED</p>	<p>PORTA-FAB CORPORATION P.O. BOX 1084 CHESTERFIELD, MO. 63006-1084</p>		
JOB: PAB36S	SCALE	N/A	DATE
<p>These documents were developed by PORTA-FAB Corporation. The contents of these documents are the proprietary property of PORTA-FAB Corporation. They are not to be copied or otherwise used without the express written permission of PORTA-FAB Corporation. Copyright 2003 PORTA-FAB Corp.</p>	DRAWN BY	CD	REVISED
	CHECKED		SHEET NO. 1 OF 1