

# Health Care Solutions

BY PORTAFAB



## Modular Building Systems for Controlled Environments



# Quick, Clean Construction

**Quickly** create temporary, semi-permanent and permanent rooms within hospitals, medical centers and health care facilities. As a **Clean Build** alternative to traditional construction, PortaFab's pre-engineered systems require minimal onsite cutting and fabricating which minimizes contamination threats and helps comply with Class IV ICRA guidelines for infection control.

## The Benefits of PortaFab's Clean Build Systems



### Fast & Easy to Install

Pre-engineered systems can be assembled quickly with minimal training.



### Dustless, Clean Installation

Requires minimal on-site construction and fabrication.



### Easy to Clean

Smooth, uniform wall surfaces allow for easy disinfection.



### Reusable

Modular components allow for unlimited design potential.



### Versatile

Easily expand, relocate or reuse to adjust to changes in demand.



### Class "A" Material

Tested in accordance with ASTM E-84 requirements for flame spread and smoke density.



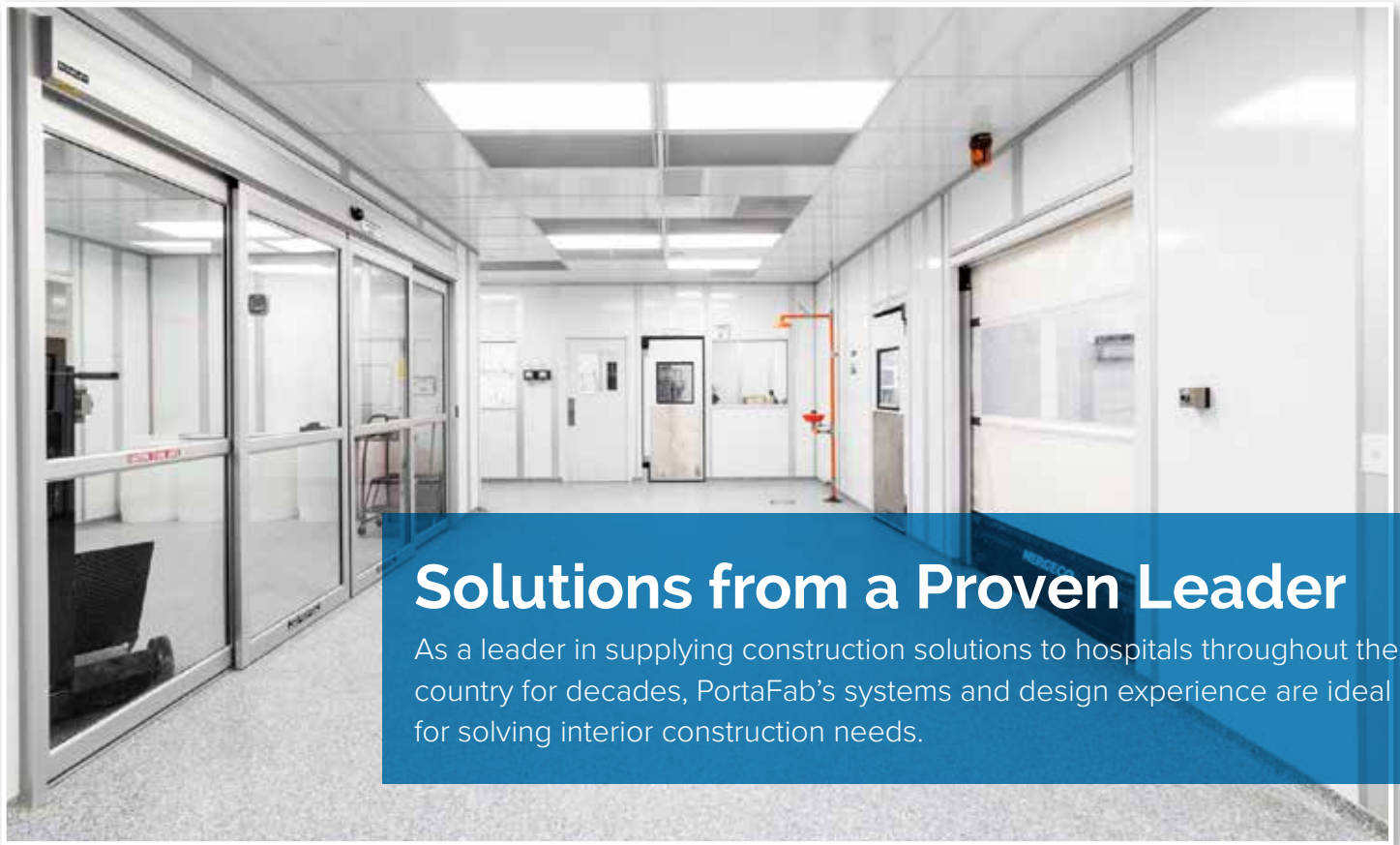
### PE Stamped Drawings

Able to meet stringent construction guidelines (additional cost applies).



### Sound Deadening

Sound attenuating foam cores reduces sound transmission.



## Solutions from a Proven Leader

As a leader in supplying construction solutions to hospitals throughout the country for decades, PortaFab's systems and design experience are ideal for solving interior construction needs.

### Proven and Certified Results

In addition to providing systems to meet the ICRA's and CDC's standards for the construction of airborne infection isolation rooms, PortaFab has outfitted hospitals across the country with USP 797 / 800 compliant compounding rooms for years.

### Unmatched Selection

PortaFab offers the most proven line of modular cleanroom systems. From our ultra-versatile F2000 system to our popular Series 300 and OmniFlex systems, we are able to provide an effective solution for every space and application.

### Experienced Team

With over 40 years of experience designing and manufacturing cleanrooms and environmental enclosures worldwide, you will benefit from our decades of knowledge. We not only manufacture quality systems but we can assist architects and construction companies with the design and engineering of quality solutions that comply with most building codes and industry standards.

### ISO Certified

At PortaFab, we manufacture all products in compliance with ISO standards and maintain a focus on continuous quality improvement.

While manufacturing in accordance with ISO standards often requires more time and documentation, our position as a leading supplier to the medical, pharmaceutical and food processing industries necessitated this investment. Achieving ISO 9001:2015 certification further underscores the emphasis placed on quality and compliance throughout our organization.



Local installation available from our network of Certified Healthcare Constructors





# Airborne Infection Isolation Rooms

— Modular Cleanroom Systems for AIIRs

As a global leader in the supply of modular cleanroom systems to the pharmaceutical, medical and healthcare industries, PortaFab has the experience to help you meet the CDC and ICRA standards that help guide best isolation room construction standards.



Our modular systems can be used to create negative pressure isolation rooms and deployable AIIR shelters as well as temporary wall systems for segmenting corridors and creating quarantined areas in all type of hospitals and health care facilities.

## Seamless Integration with Filtration Systems

With decades of experience in developing systems for both negative pressure and positive pressure rooms, PortaFab has the building systems and engineering experience to help you achieve your infection control goals quickly.

## Integration of Various Door Systems

PortaFab's wall systems are designed to integrate seamlessly with a wide variety of door options including single, double, sliding and other specialized doors. Single and double doors are stocked and can be outfitted with door closers and hospital push pull latches.



## Rigid Partitions

PortaFab's modular cleanroom systems have decades of proven success in some of the most rigidly controlled environments. Our highly versatile, pre-engineered systems integrate seamlessly to create smooth, cleanable surfaces while minimizing leakage and helping one contain air pressure, ventilation and temperature.

## Proper Air Flow

Our in-house engineering team and extensive network of local distributors understand the need for proper air flow when outfitting isolated areas. PortaFab's systems are designed to accommodate the air supply ducts and grills with minimal on-site fabrication.



# Anterooms

## Essential Rooms for Infection Control

As an added level of defense against infection risk, anterooms are often included in the design of many airborne infection isolation rooms. They are also essential for use in renovation, clean operations in hospitals, assisted living facilities and other health care facilities.

PortaFab's modular systems can be used to quickly and effectively to solve the need for anterooms.

### Key Benefits

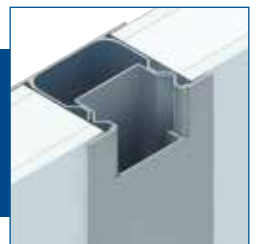
- Install quickly and cleanly
- Demountable & Relocatable
- Feature smooth, easy-to-clean surfaces that withstand aggressive cleaning agents
- Can be outfitted with fan filter units or support other air filtration systems.
- Walls integrate seamlessly with self-closing, hospital doors designed to meet room pressure requirements.



Can be configured in almost any shape or size, from small rooms attached to patient rooms to large gown rooms for an entire department.



Systems Include wiring studs for installing pressure monitors and alarm equipment.



# Temporary Walls

## — Movable & Temporary Walls for Hospitals

PortaFab's innovative line of modular building systems are ideal for creating movable or temporary walls and rooms within a hospital or health care facility.

PortaFab's pre-engineered wall systems eliminate many of the complexities associated with traditional construction and can be outfitted with a wide variety of wall panels including numerous sizes and styles of glass.

- Ideal for quick retrofits
- Fast, clean installation
- Pre-Engineered for reduced project coordination
- Fully demountable and relocatable
- Lower cost – especially when compared to architectural glass walls
- Adjust easily to irregularities in heights (uneven ceilings)
- Sizes from free-standing 8' to 12' walls
- Easy integration of custom doors



### Common Applications

- Hospital Isolation Walls
- Patient Rooms
- Nursing Stations
- Anterooms
- Hospital Testing Facilities
- Triage Centers
- Deployable Shelters
- Multi-Purpose Facilities
- Temporary Hospitals in Convention Centers







# Deployable Shelters

When communities need to respond quickly to large-scale disasters and emergencies, PortaFab's line of modular building systems are an ideal solution.

They can be used to create structurally sound rooms and buildings that can be rapidly deployed and built on site in a quick, clean manner with minimal disruption to the surrounding area.



Numerous options including optional self-contained, high-efficiency particulate air (HEPA) filtration systems and pass through chambers can be easily integrated into PortaFab systems.



## Shelter Features

- Optional Pass Thrus
- Ceiling Systems
- Multiple Window Styles
- Unlimited Wall Panel Configurations
- Low-Energy Fan Filter Units
- Various Door Styles



# Modular Cleanroom Walls

— Solutions for Health Care

Drawing on our decades of experience in developing cleanroom systems used within the medical and pharmaceutical industries, PortaFab's systems are ideal for maintaining strict environmental control - over air quality, pressure and temperature - while offering a high rate of cleanability.

PortaFab has earned a reputation in the industry for engineering and manufacturing some of the strongest modular building systems on the market. Simply put, our CleanLine Wall Systems allow us to build bigger, stronger interior rooms.



Cleanroom built with our Series 300 system.



Anteroom is essential for infection control.



Series 300 wall with sliding door.



## Wall Systems

*Our modular systems are capable of creating a variety of environmental enclosures ranging from basic temperature and humidity control to negative and positive pressure hospital rooms that follow CDC standards.*

*Our large selection of interchangeable modular wall systems and components provide an economical solution to the design and build of clean environments that produce reliable and high performance negative pressure isolation rooms.*



### OmniFlex

OmniFlex is our all-purpose 3" thick framing system. It features double layer steel studs that provide the quality, appearance and cost savings that make conventional construction obsolete. It installs quickly with minimal disruption to its surroundings.

#### Features & Benefits

- "Quick-Ship" availability
- Modular flexibility
- Easy-to-clean
- Standard wall heights up to 17'







# The CleanLine Family of Wall Systems

Our CleanLine systems are ideal for constructing rooms and buildings within the health care industry. The all-aluminum framework can provide load-bearing capabilities to support air-filtration and equipment and is ideal for creating highly controlled environments as it resists moisture and sanitizing procedures.



## 1. F2000 Wall Systems

The F2000 wall system features wall panels that are easy-to-clean and highly resistant to aggressive cleaning solutions – both factors that decrease contamination concerns. The non-progressive design allows for easy removal of the walls without the need to remove adjacent panels.

### Features & Benefits

- Durable, easy-to-clean surfaces
- Gasketing options
- Support for processes/utilities

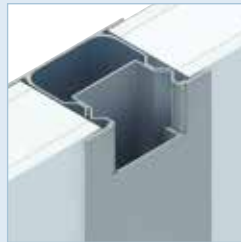


## 2. Series 300 Wall System

Our Series 300 wall system features 3" thick, sturdy walls that can extend to an existing ceiling, divide space or create large, free-standing rooms and enclosures. It features anodized or painted aluminum studs typically specified for use in hospital and applications which need to comply with stringent environmental control guidelines.

### Features & Benefits

- All aluminum construction
- Wiring raceway for easy integration of electric and data lines
- Standard wall heights up to 17'

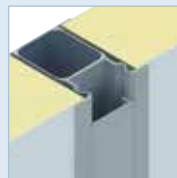


## 3. PortaMax XTRA TALL Wall System

Our PortaMax product line features thick, sturdy walls that can extend to the existing ceiling and divide space.

### Features & Benefits

- Extended heights up to 23'
- 4-5/8" thick walls accommodate commercial door systems



## 4. Furring Wall System

This economical system provides the ability to create a cleanroom or controlled environment within an existing room. Furring wall systems offer an attractive, cost-effective option for construction over existing block or gypsum walls, studs, and columns. The functional design also allows these walls to be installed on metal studs to create a mechanical/plenum chase.

### Features & Benefits

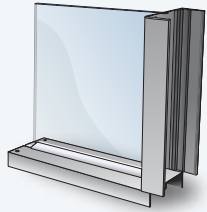
- Flush cleanable surface
- Quick and cost-effective
- Easy connection to wall or stud framework
- Available in 1/4" and 1/2" thicknesses





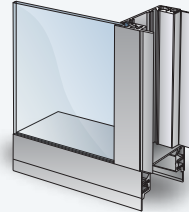
## Windows

Multiple window styles integrate seamlessly with our modular wall systems and can be specified with a variety of sizes and glazing options.



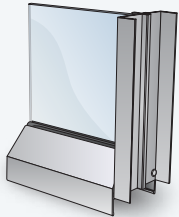
### Standard Window

These economical window styles include fixed windows that measure up to 4' wide by 3' high and provide exceptional support and durability.



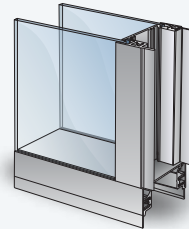
### Flush Window

The flush nature of this window style eliminates ledges while providing a very easy to clean surface. It is ideal for environments requiring extensive environmental control.



### Beveled Window

The angled style allows for easy cleaning and eliminates ledges that collect dust and particles.



### Double Flush Window

Designed for interior wall applications that require flush surfaces on two sides, the double flush window system provides an attractive appearance and two flush surfaces.



## Doors

PortaFab wall systems are designed to seamlessly integrate a wide variety of door options. Options range from our stocked single and double doors with standard self closing hardware to more sophisticated sliding, roll-up and specialty doors.



### Single Doors

Our standard single cleanroom doors are precision manufactured and available in many surfaces including steel, fiberglass, aluminum and stainless steel.



### Double Doors

Featuring the same durable construction and options as our single doors, double doors allow for the easy movement of patients, equipment and personnel throughout a facility.



### Sliding Doors

Sliding doors easily integrate into our wall systems and are available in any size with a variety of hardware available including push button entries, motion sensors and non-outgassing seals.



### Specialty Doors

We also have the ability to integrate a wide variety of specialty doors into our modular systems.



## Integrated Components

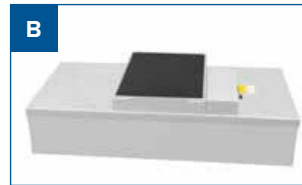
Our pre-engineered systems allow for the seamless integration of a variety of components in order to enhance the functionality of the space or more effectively meet the requirements of a specific application.

**A. Coving** - One key to maintaining ultra-clean facilities that comply with the most stringent standards for Cleanliness is to eliminate corners.

- Coving options are available to improve Cleanliness and reduce contaminant buildup.
- Coving can be added at intersection of wall, floor or ceiling.



**B. Fan Filter Units** - Various fan filter units can be incorporated into PortaFab cleanrooms depending on your exact specifications.



**C. Negative Pressure Filter Units** - A portable, self-contained high efficiency particulate air (HEPA) filtration system designed to easily and economically create a negative pressure isolation room/environment that will meet OSHA and CDC TB guidelines.



**D. Pass Through Chambers** - Pass through chambers minimize entry of contaminants by providing a means for pick-up and delivery of products and supplies without personnel entry. Productivity is increased while delivery personnel and contaminants remain outside.



**E. Grille Openings** - Grille openings and cutouts for air duct collars, pressure monitors and other climate control equipment can be factory installed to reduce labor costs and assembly time.

**F. Air Showers** - Air showers and air shower tunnels for both personnel and carts integrate easily into PortaFab wall systems.

**G. 2" Gasket Seal** - The 2" Gasket-Seal Ceiling Grid System combines flexibility with simplicity to meet the ever-changing needs of the health care industries. It is a functional system that provides a 2" wide structural grid system with aluminum extrusions and zinc die castings to receive standard filter modules, light fixtures and blank ceiling tiles. Truly an engineered system for ease of installation, the system can be used in 2' x 2', 2' x 4', 4' x 4' and custom layouts.





# Additional Modular Construction Capabilities



Modular Architectural Cleanroom Systems



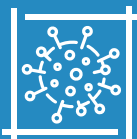
Applications & Ideas



Modular Offices & Inplant Buildings



Data Center Walls & Enclosures



**Health Care Solutions**  
BY **PORTAFAB**

PortaFab Corporation  
18080 Chesterfield Airport Rd.  
Chesterfield, MO 63005 USA

Phone: 800-325-3781  
isorooms.com

© 2024 PortaFab Corporation