



# Cultivation Rooms

BY PORTAFAB

**FLOWER 2**



## Modular Cleanroom Systems for the Cannabis Industry





**Construction Simplified**



# Why Choose Modular?

## Explore the Benefits of Modular Construction

### Clean Installation

Modular components are non-shedding and require minimal on-site fabrication, resulting in less material waste.

### Increased Speed to Market

Pre-engineered, modular components reduce design time and streamline on-site assembly for faster speed to market.

### Grow with Your Business

Modify or relocate buildings to a new facility (great for leased spaces) without showing signs that a repair or modification has been made.

### Tax Advantages

Modular construction can be depreciated over 7½ years (compared to 39 years with traditional construction), allowing for a much quicker ROI.

### Simplified Engineering

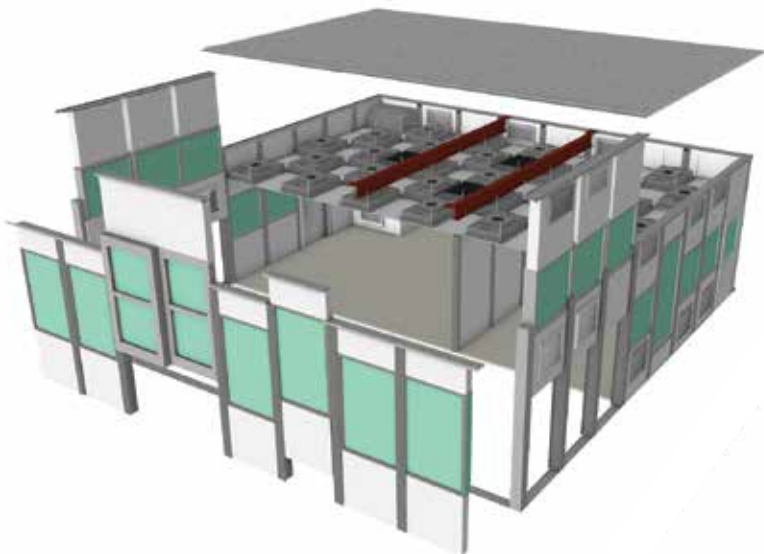
Easily integrate interior mechanical systems for improved environmental control or other enhancements to meet future compliance.

### A Turnkey Solution

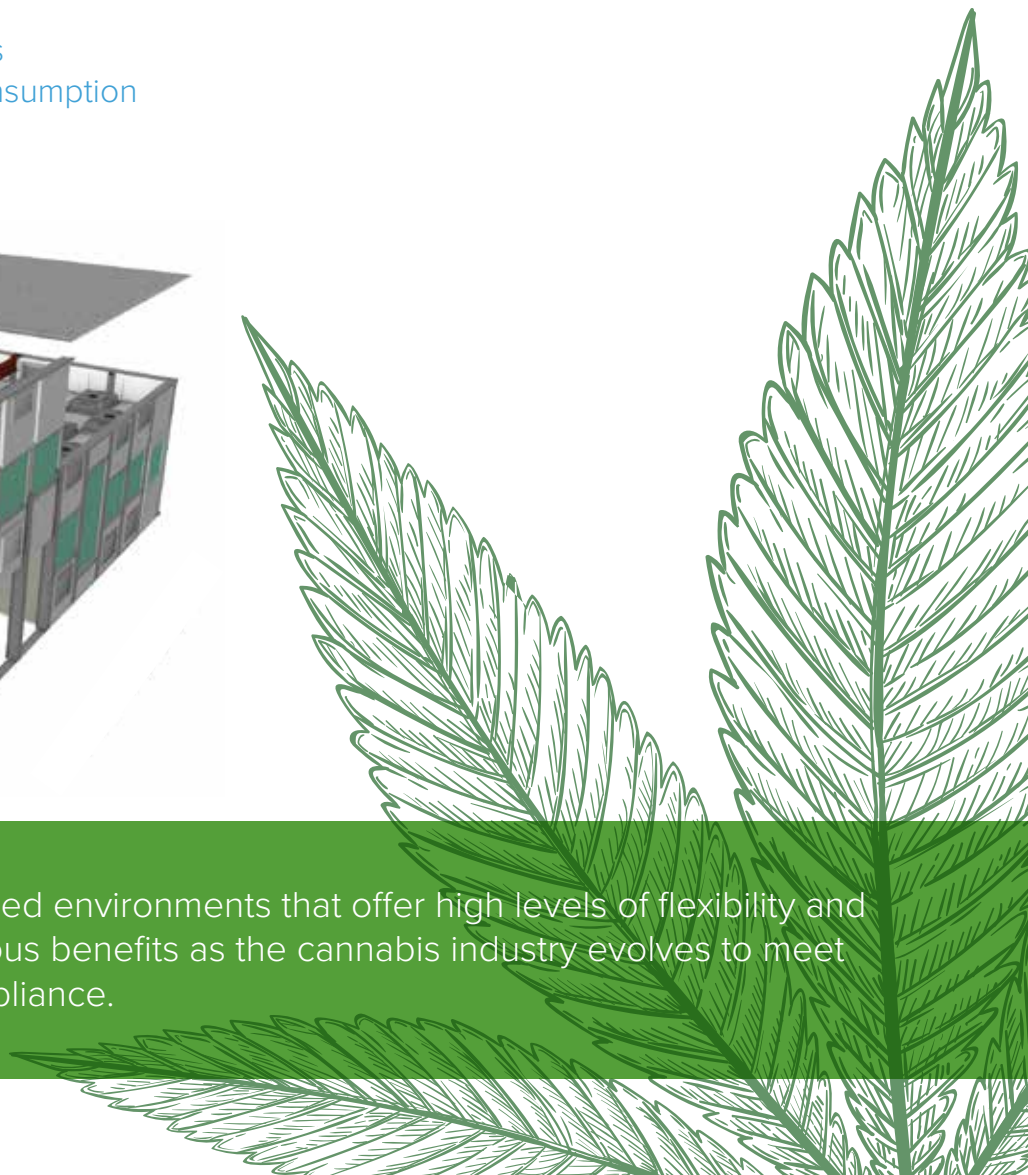
PortaFab supplies single source installation through a factory-trained distributor network - providing you with a complete turnkey approach that includes local support and assistance.



Controlled Environments  
Help Manage Water Consumption



The benefits of building controlled environments that offer high levels of flexibility and adaptability will provide numerous benefits as the cannabis industry evolves to meet future standardization and compliance.





# Build for Future Compliance

PortaFab's modular construction solutions allow for projects as small as an 8'x8' clone room to an entire facility buildout.

## Why PortaFab?

### Proven and Certified Results

From California's MCRSA laws to future regulations from the FDA and USDA, it is inevitable that cGMP compliance will significantly impact the future of cannabis cultivation and production. PortaFab has both the experience and product selection to meet the demanding needs of today's and tomorrow's leaders in the cannabis industry.

### Unmatched Selection

With the industry's most extensive line of interchangeable modular cleanroom systems, we can offer a quality solution for every spatial need and application - from basic temperature and humidity control to pharmaceutical grade cleanroom environments.

### Experienced Team

With over 35 years of experience designing and manufacturing cleanrooms and environmental enclosures worldwide, you will benefit from our decades of knowledge. Not only do we know how to manufacture quality components, but we are accustomed to assisting architects and construction companies with the design and engineering of quality rooms that adhere to current cGMPs.



Locally sourced installation through our extensive network of experienced dealers

As a global leader in the supply of modular cleanroom systems to the pharmaceutical, medical and food processing industries, PortaFab has the experience to help you meet the inevitable standards that will affect the growing cannabis industry.

# Wall Framing Systems

## Adaptable Solutions for your Entire Facility

We offer three distinct wall systems that allow you to quickly and economically achieve the required level of environmental control within your facility.

### S3000 Wall (Free-Standing Enclosures)

A versatile 3" wall system that can be used to create free-standing buildings without having to tie into the existing (or surrounding) structure.

- Heights up to 18-feet.
- Load-bearing capabilities to support and access lighting and filtration equipment.
- Flush wall surfaces.
- Aluminum framework for high moisture and sanitization processes.

### PortaMax Wall (Reach Extra Heights)

The PortaMax line features thick, sturdy walls that can extend to the existing ceiling, divide space, or create large, free-standing enclosures.

- Extended height and load-bearing capabilities to support and access lighting and filtration equipment.
- Smooth wall surfaces and aluminum framework for high moisture and sanitization processes.
- Additional thickness allows for improved thermal insulation.

### Furring Wall (Wall Cladding Applications)

The Furring wall is an attractive, cost-effective solution for cladding existing block or gypsum walls, studs, and columns.

- Available in 1/2" and 1/4" thicknesses.

---

## Modular Offices & Mezzanines

In addition to outfitting your facility with controlled environments, PortaFab offers a complete line of modular building systems to meet all of your space requirements.

- Inplant offices
- Mezzanines
- Partitions
- 2-Story offices
- Demising walls
- Laboratories



PortaFab's load-bearing aluminum framework allows for two-story construction to maximize all vertical space in your facility.

# Modular Wall Panels

## Durable, Cleanable, Compliant

Choosing the right wall panels for your facility can play a very integral role in your ability to comply with regulatory standards. We offer three primary wall panels, specifically selected for grow room requirements that are:

- Durable enough to withstand regular cleaning.
- Resistant to moisture.
- Compliant with cGMP standards.



PortaFab's grow room panel has a white finish to maximize reflectivity.



### Grow Room Panel

Our Grow Room Panel combines durability, cleanability and excellent thermal control for maximum results.

- Polyisocyanurate foam core is moisture-resistant and thermally efficient.
- Available with durable and easy-to-clean painted steel or aluminum surfaces.
- Non-combustible, structurally sound panel.



### Fire & Sound Panel

Our standard Fire and Sound Panel offers an economical option for achieving environmental control.

- Polystyrene core provides thermal insulation and sound deadening properties.
- Two layers of moisture-resistant gypsum to achieve class A noncombustible rating.
- Panel facing options include painted steel, aluminum, vinyl, or FRP.



### Fiberglass Reinforced Plastic (FRP) Panel

Our popular Fiberglass Reinforced Plastic (FRP) Panel offers great thermal insulation and is ideal for highly sanitized environments.

- Polyisocyanurate foam core is moisture-resistant and very thermally efficient.
- Fiberglass reinforced plastic (FRP) holds up to regular cleaning and sanitization procedures.

# Modular Components



## Solutions for Enhanced Functionality

A variety of integrated modular components to complete the design of your building.

### Roof Options

We offer various roof options to complete your design in a cost-effective manner while meeting your environmental control goals and load-bearing requirements.



- Painted steel roof meets load-bearing requirements up to 125psf
- Panelized roof provides greater thermal control and meets load-bearing requirements

### Window Styles

To help display your operation or enhance certain work areas, we manufacture multiple cleanroom window styles that integrate seamlessly with our modular wall and ceiling systems. Standard sizes are 4'x3' and 4'x6'.



- Beveled windows
- Flush windows
- Double flush windows
- Custom sizes available

### Door Styles

Our modular cleanroom systems can be designed with a variety of door types to help maintain environmental control without sacrificing productivity.



- Single doors
- Double doors
- High speed roll up doors
- Sliding doors
- Specialty doors

### Integrated Components

Seamless integration with a variety of components to enhance functionality.



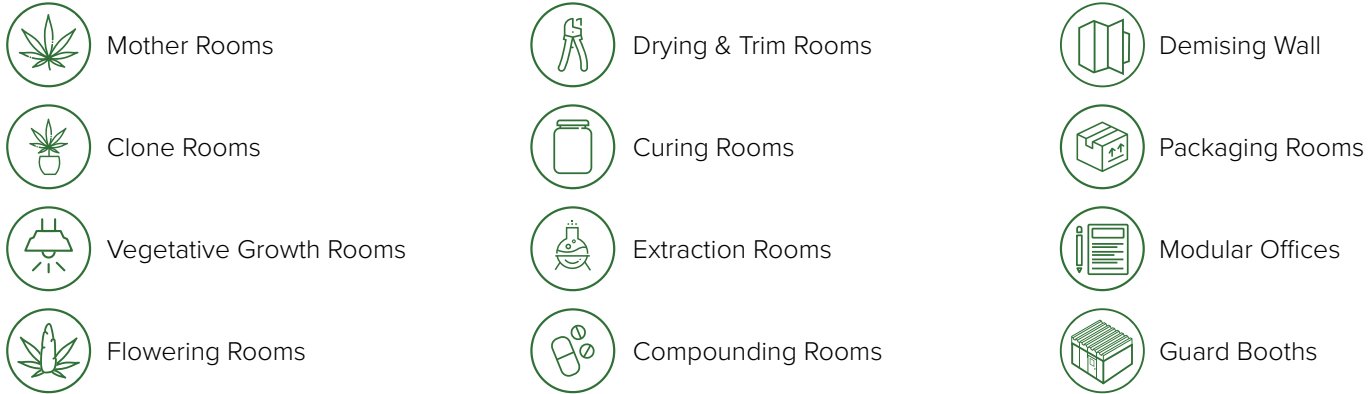
- Wall & floor coving
- Lighting
- Air filtration
- MEP (Mechanical Electrical Plumbing)
- Security



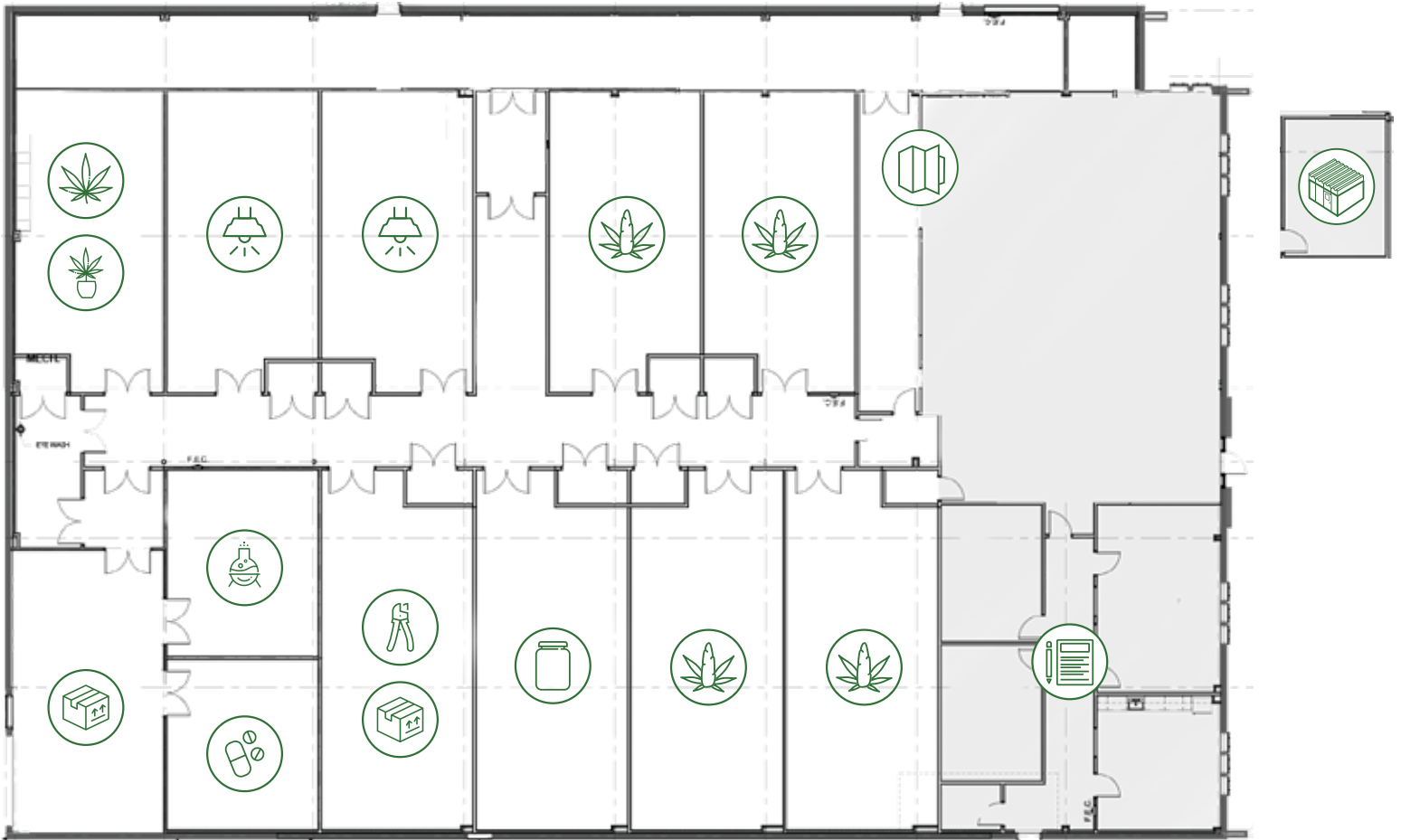
PortaFab's structural framing systems allow for self supported structures up to 24' tall allowing for integrated racking systems.

# Complete Solutions for Perpetual Harvesting

With our extensive product line and the ability to develop customized solutions, PortaFab can help create controlled environments for every phase of cannabis production and processing.



Environments can also be designed to accommodate growing systems using all types of soils and hydroponic systems used in cannabis production including rockwool, coconut fiber, clay pellets, perlite, vermiculite and organic soil.



**Cultivation Rooms**  
BY PORTAFAB

PortaFab Corporation  
18080 Chesterfield Airport Rd.  
Chesterfield, MO 63005 USA

Phone: 800-325-3781  
Fax: 636-537-2955  
cultivationrooms.com

© 2017 PortaFab Corporation